



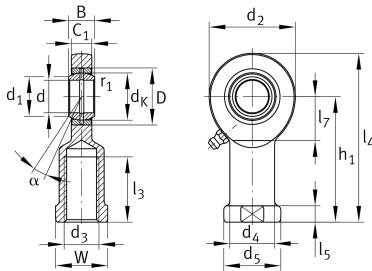
## GIL17-DO

### Rod end

Schaeffler ID:  
0066351800000

Rod end with internal thread, left hand thread, requiring maintenance, sliding contact surface: steel/steel, DIN ISO 12240-4, dimension series E, type F, open design

### Technical information



### Main Dimensions & Performance Data

d	17 mm	Bore diameter bearing
D	30 mm	Outside diameter bearing
B	14 mm	Width inner ring
C <sub>r</sub>	21,300 N	Basic dynamic load rating, radial
C <sub>0r</sub>	56,500 N	Basic static load rating, radial
G <sub>r</sub>	0,03 - 0,082 mm	Radial Clearance
	0.248 kg	Weight

### Dimensions

d <sub>K</sub>	25 mm	Ball diameter
d <sub>1</sub>	20.7 mm	Outer flange diameter inner ring
d <sub>2</sub>	46 mm	Outer eye diameter
d <sub>3</sub>	M16	Thread size
d <sub>4</sub>	24 mm	Shank diameter
h <sub>1</sub>	67 mm	Shank Length Internal thread head
α	10 °	Tilt angle
l <sub>3</sub>	34 mm	Thread length Internal thread
l <sub>4</sub>	90 mm	Total length internal thread head
l <sub>5</sub>	10 mm	length rod end shank
l <sub>7</sub>	23 mm	Distance drilling with/shaft start
d <sub>5</sub>	30 mm	Shank diameter, large
C <sub>1</sub>	11 mm	Width of the rod end
r <sub>1smin</sub>	0.3 mm	Edge Spacing
W	27 mm	Width Across Flat
d <sub>OT</sub>	0 mm	Bore diameter bearing, upper tolerance
d <sub>UT</sub>	-0.008 mm	Bore diameter bearing, lower tolerance
B <sub>OT</sub>	0 mm	Width inner ring, upper tolerance
B <sub>UT</sub>	-0.12 mm	Width inner ring, lower tolerance

**Temperature range**

T <sub>min</sub>	-50 °C	Operating temperature min.
T <sub>max</sub>	200 °C	Operating temperature max.